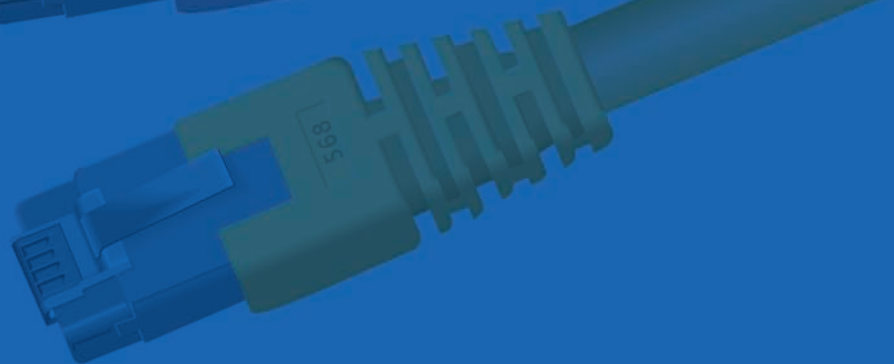
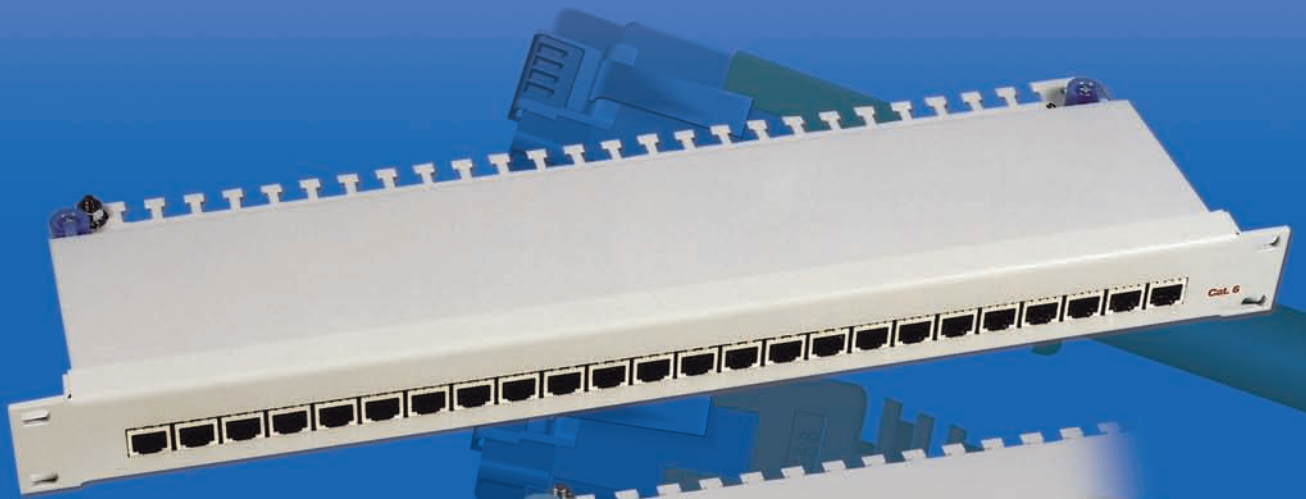


# ICT PATCHING





Num: Eldon\_200801\_001

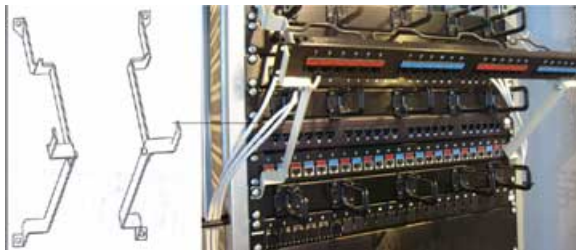
## 19" CAT.3 and CAT.6 distribution panels, PAT/PAD

### Patching

The Eldon Networking solution, EIRack, is already well known and respected in the market place for its flexibility, usability and versatility. Eldon is pleased to announce a number of exciting new additions to the range, which we think will make life even easier for the installer or end user. Recently introduced is our award winning TFT-screen with front USB-port including KVM switches, which is suitable for up to 16 servers.



We also now offer a complete range of CAT.3 Telecom and CAT.6 Distribution panels, including an amazing space saving 1/2U high versions! All CAT.6 panels are screened, in order to meet the highest standards.



To make installation even simpler and quicker, we have also developed a handy installation tool. This "third hand" will hold your distribution panel in place at the correct angle, so none of your cables get damaged. You can also make all your required connections, at the same time.

Finally, a full range of glass fibre optical splice boxes with pigtails completes these latest developments. Every connection is tested separately, in order to meet the highest industry standards.

With these products you have the choice between a full range of copper and glass connection possibilities. High quality products suitable for *all certified* networks.



Eldon-Networking, guaranteeing the link in YOUR network.

For more information contact your local Eldon Distributor or go to [www.eldon.com](http://www.eldon.com)



**PADP, 19" Cat.6 Pass through distribution panel**



**Description:** Pass through distribution panel, shielded, for sub distribution in structured communications networks according to ISO/IEC11801 and DIN EN50173. Both the front and rear are equipped with RJ45 connections for incoming and outgoing cables. Very user friendly and time saving installation.

**Additional information:** Especially designed for Networking Providers with separated responsibilities for active and passive components

**Connection:** Cat.6 front and rear female RJ45 connectors, EMC protected

**Earthing:** Earthing stud for 16mm<sup>2</sup>

**Colour:** RAL7035, light grey

**Weight:** ca. 1400gr

**Pack. quantity:** 1 pass through distribution panel with cover, for certified networks

**PADM, Mounting aid for distribution panels**



**Description:** Mounting aid for all types on the market available 19" patch/distribution panels of 1U height. A secure, easy and fast mounting on the patch rack can be done by only two screws. The withdrawn patch panel now has the correct working angle. The panel will be positioned under a 45 degree angle, securing a correct and mild cable radius preventing any damages to the core. Can also be mounted onto a fully equipped rack. Suitable for any distribution panel up to a depth of 160mm.

**Additional information:** Click the panel firmly in place. The (rear) wiring of the panel will be much easier and therefore ergonomically less straining. As the profiles can be folded together it will fit in any toolbox

**Colour:** RAL7035, grey

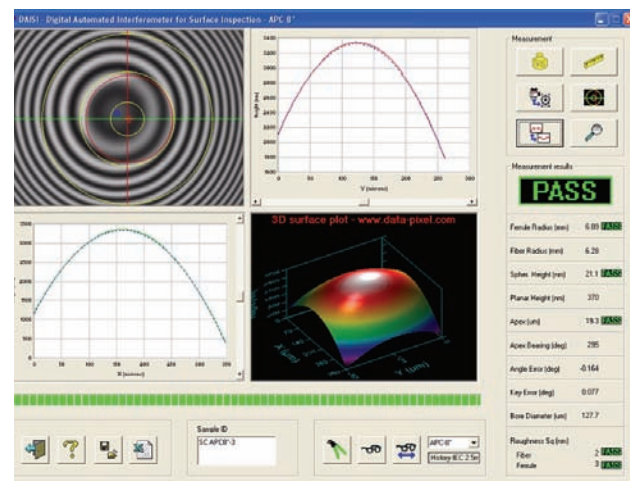
**Weight:** ca. 350gr

**Pack. quantity:** 2 mounting profiles which can be folded together

Description	Part No.
260 x 45	PADM02

Height U	Front Nr.	Rear Nr.	Depth	Part No.
1/2	24	24	58mm	PADP062415
1	24	24	58mm	PADP162415

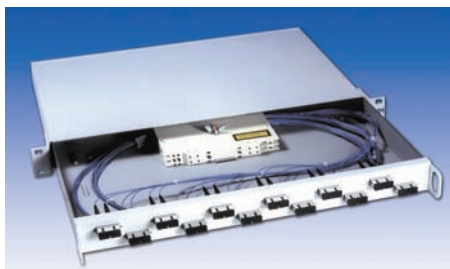
**Test Screen, Interferometer-Measuring**



Interferometer-measuring of a fibreglass-connection Eldon components can be used in certified networks. In order to maintain a high quality level each and every connection is tested on a individual basis. By using an Interferometer, the surface of a fibreglass connection can be visualized three-dimensional. By doing so, one can gather detailed information about the quality of the polish. It supplies information about the roughness, cleanness, scratches or thickness of the glue at the tip of the plug. Even more important is the possibility to get information about the positioning of the fibre in relation to the centre of the Polish (APEX). If the fibre is sticking out or if it is in too deep or if the radius is Ok is further information, which can be obtained. It is only possible to get this information using interferometer measuring. It doesn' t substitute the usual "damping test", but gives additional information about the production quality of a highly sophisticated fibreglass-connection.

## ElRack Patching

### PAF, 19" Fibre Optical Splice Box N, drawer with



**Description:** Fibre optical distribution panel with drawer technique, utilised in structured communications networks as laid down in the standards ISO/IEC 11801 and DIN EN 50173. Distribution panels for 19" racks, are available for all types of fibre optic connectors currently in use.

**Additional information:** Empty distribution panel suitable for splice cassette PAFS

**Connection:** 1U box suitable for different connections SC and ST or a combination of them

**Weight:** appr. 3600 gr

**Colour:** RAL7035, light grey

**Pack. quantity:** 1 Fibre optical splice box, drawer version including 4 cable entry guides

### PAFS, Splice kit for splice box



**Description:** Splice kit for an extension of the splice boxes PAF(M).

**Pack. quantity:** 1 fibre optical splice box, splice cassette lid, splice holder, 15 crimp splice protectors and 2 tire wraps

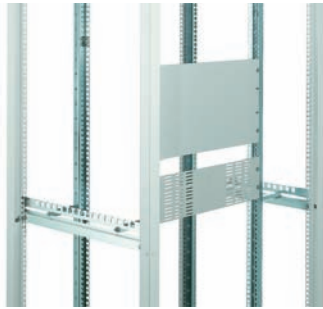
Description	Part No.
incl. 15 crimp splice protectors	PAFS01

Height U	Front connection	Rear Nr.	Description	Depth	Part No.
1	SC/SC duplex	12	Single-Mode	300mm	PAF112225
	ST/ST	12	Single-Mode	300mm	PAF112235
	SC/ST duplex	12	Single-Mode	300mm	PAF124335
	SC/SC duplex	12	Multi-Mode	300mm	PAFM112225
	ST/ST	24	Multi-Mode	300mm	PAFM112235
	SC/ST duplex	12	Multi-Mode	300mm	PAFM124335

Part no. PAF124335, PAFM124335, PAF112235 and PAFM112235 only available on request



**PAC, Painted steel front panels**



**Description:** Blank panel  
**Material:** 3 mm steel.  
**Finish:** Light grey, RAL 7035 structured paint.  
**Pack. quantity:** 1 piece

W	Height U	Part No.
19"	1	PAC01
	2	PAC02
	3	PAC03
	4	PAC04
	5	PAC05
	6	PAC06
	8	PAC08
	10	PAC10
	11	PAC11
	12	PAC12

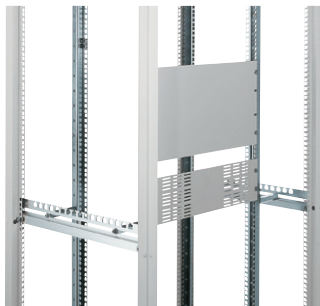
**PAL, Aluminium front panels**



**Description:** Blank panel  
**Material:** 3 mm, brushed anodised aluminium, AlMg1  
**Pack. quantity:** 1 piece

W	Height U	Part No.
19"	1	PAL01
	2	PAL02
	3	PAL03
	4	PAL04
	5	PAL05
	6	PAL06
	8	PAL08

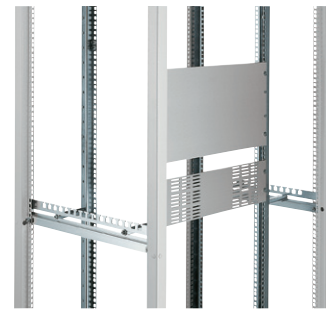
**PACV, Ventilated front panels**



**Description:** Blank panel with vents.  
**Material:** 3 mm steel.  
**Finish:** Light grey, RAL 7035 structured paint.  
**Pack. quantity:** 1 piece

W	Height U	Part No.
19"	1	PACV01
	2	PACV02
	7	PACV07
	8	PACV08

**PALV, Aluminium front panels vented**



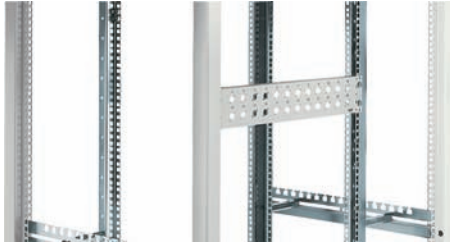
**Description:** Blank panel vented.  
**Material:** 3 mm brushed anodised aluminium, AlMg1  
**Pack. quantity:** 1 piece

W	Height U	Part No.
19"	1	PALV01
	2	PALV02
	7	PALV07
	8	PALV08



## ElRack Patching

### PAP, Patch panels



**Description:** For cable entry, with edge protection. A 20 mm band on one side is left unpainted on the rear side for optimal earthing with the 19" U profile.

**Material:** Made from 1.5 mm galvanised steel.

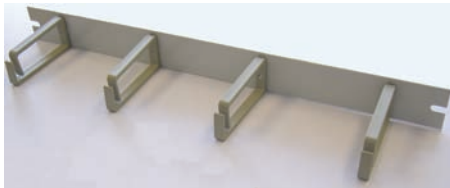
**Finish:** Light grey RAL 7035 with blue screen numberings.

**Pack. quantity:** 1 piece.

N° of cut outs	Height U	Usage	Part No.
1	1	Cable entry	PAP01CE
	2	Cable entry	PAP02CE
	1	Blank	PAP01BLK
32	2	RJ 45 connectors	PAP02RJ45
	3	BNC connectors	PAP03BNC

*Other cut-outs and special patch panels are available on request*

### HCM, Horizontal cable manager



**Description:** One unit high blank patch panel provided with holes for the mounting of 4 CGP plastic cable guides.

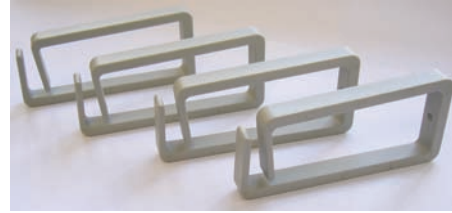
**Material:** 3 mm steel plate.

**Finish:** Structure powder paint, RAL 7035.

**Pack. quantity:** 1 piece

U	Part No.
1	HCM01

### CGP, Plastic cable guide



**Description:** Flexible cable guide with opening for easy insertion of cables.

**Material:** Reinforced glass-fibre

**Finish:** Grey

**Sizes:** 93 x 41 mm.

**Pack. quantity:** 10 pieces with fixing screws.

Dim	Part No.
41 x 93	CGP01

### CGPT, Patch cord guide



**Description:** Patch cord guide for both Pigtails and Patch cables. Equipped with hinged and removable tongue easy re-routing of the cables.

**Material:** Polycarbonate UL94HB

**Colour:** RAL9001, light grey

**Weight:** ca. 20 gr

**Delivery:** 1 body with mounted tongue and two screws M5x6

Dim	Part No.
70	CGPT70

### CGS, Cable guide



**Description:** Can be fixed on each side.

**Material:** 4 mm steel plate.

**Finish:** Structure powder paint, RAL 7035.

**Pack. quantity:** 20 pieces with mounting material.

Dim	Part No.
55 x 85	CGS01