

# TERMINAL BOXES





**STB** **180**

mild steel

IP 66

H: 150-400  
W: 150-800  
D: 80-120



**OABP** **188**

ABS

IP 66 / 67

H: 200-400  
W: 200-600  
D: 130



**ILS** **182**

stainless steel

IP 66

H: 150-400  
W: 150-800  
D: 80-120



**DPCP** **190**

polycarbonate

IP 66 / 67

H: 53-230  
W: 55-300  
D: 36-121



**HALP** **183**

aluminium

IP 65

H: 45-230  
W: 50-600  
D: 30-180



**OPCP** **191**

polycarbonate

IP 66 / 67

H: 200-400  
W: 200-600  
D: 130



**MGRP** **184**

polyester

IP 65

H: 75-405  
W: 80-560  
D: 55-120



**DABP** **185**

ABS

IP 66 / 67

H: 53-230  
W: 55-300  
D: 36-121



**SABP** **186**

ABS

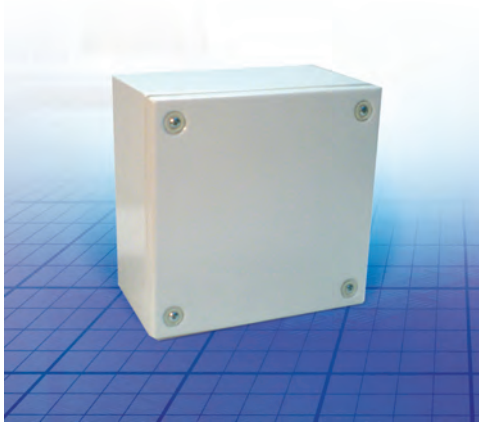
IP 66 / 67

H: 75-175  
W: 125-250  
D: 75-150



## Mild steel

### STB, Steel terminal box



**Material:** 1.2mm mild steel.

**Body:** Folded and seam welded. Four 8.5mm diameter holes for wall fixing. Four M6x13 studs for Bottom Profiles/Mounting plate .

**Gasket:** Sealing is ensured by an injected one piece polyurethane gasket.

**Earthing:** Earthing studs M8x12mm in body and cover, M8 nuts, earth washers, and earth labels.

**Protection:** Complies with IP 66, IK 10.

**Finish:** RAL 7035, structure powder coating.

**Approvals:** CE, KEMA, cUL, UL.

**Delivery:** Base, cover, cover screws, fixing screws, cover plugs, and earthing facilities.

H	W	D	Weight	Part No.	
150	150	80	1,24	STB151508	
		120	1,46	STB151512	
		300	80	2,23	STB153008
200	200	120	2,56	STB153012	
		80	2,00	STB202008	
		120	2,30	STB202012	
300	300	80	2,82	STB203008	
		120	3,19	STB203012	
		400	80	3,67	STB204008
400	400	120	4,09	STB204012	
		500	120	4,98	STB205012
		600	120	6,02	STB206012
300	300	800	120	7,86	STB208012
		80	4,09	STB303008	
		120	4,54	STB303012	
400	400	120	5,79	STB304012	
		500	120	7,04	STB305012
		600	120	8,42	STB306012
400	400	120	7,49	STB404012	
		600	120	10,82	STB406012
		800	120	14,07	STB408012

### BPP, Bottom profile



**Description:** Bottom profile for DIN rail mounting.

**Material:** Galvanized steel.

**Pack quantity:** 2 pieces.

W	Part No.
150	BPP15
200	BPP20
300	BPP30
400	BPP40
500	BPP50
600	BPP60
800	BPP80

### BMP, Mounting plate

**Description:** Steel mounting plate for terminal boxes.

**Material:** 2mm galvanized steel.

**Pack quantity:** 1 piece.

Enclosure dimension		Mounting plate		Part No.	
H	W	h	w		
150	150	125	120	BMP1515	
		300	270	BMP1530	
		200	200	170	170
200	200	300	270	BMP2030	
		400	170	370	BMP2040
		500	170	470	BMP2050
300	300	600	170	570	BMP2060
		800	170	770	BMP2080
		300	300	275	270
400	400	400	275	370	BMP3040
		500	275	470	BMP3050
		600	275	570	BMP3060
400	400	400	380	370	BMP4040
		600	380	570	BMP4060
		800	380	770	BMP4080



### BDR, DIN rail

**Description:** DIN rail 35mm for terminal boxes.  
**Material:** Galvanized steel.  
**Pack quantity:** 5 pieces.

W	Part No.
150	BDR3515
200	BDR3520
300	BDR3530
400	BDR3540
500	BDR3550
600	BDR3560
800	BDR3580

### AW, Wall mounting brackets



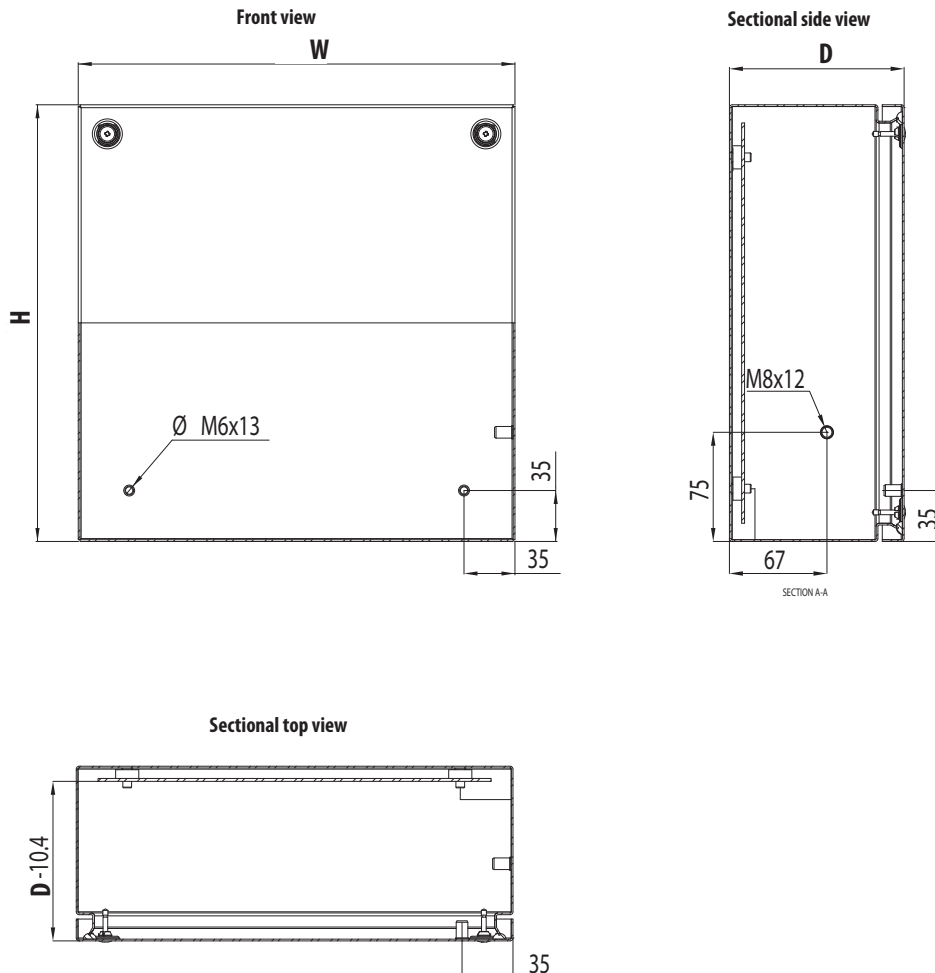
**Description:** Mounting brackets for safe wall fixing. It includes the sealing washers to guarantee the IP rating.  
**Material:** 3mm zinc plated steel.  
**Pack quantity:** 4 brackets with mounting accessories.

### STBH, Hinges

**Description:** Using this accessory the cover can be hinged. Machining is required.  
**Material:** Zinc-plated steel.  
**Pack quantity:** Hinges with mounting accessories. 2 pieces.

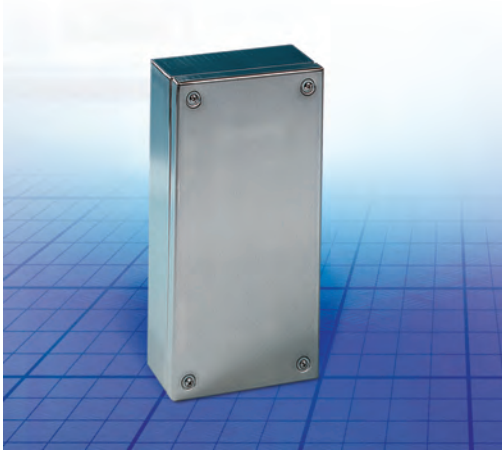
Part No.
AW41

Part No.
STBH02



## Stainless steel

### ILS, Stainless Steel



**Material:** 1.5 mm stainless steel AISI 304. Acid proof AISI 316 available on request.  
**Body:** Folded and seam welded. Supports for DIN-rails/ Mounting plate.  
**Gasket:** Polyurethane (PUR). Temperature resistant -50°C +80°C.  
**Earthing:** Earthing studs M6 x 15 in body and cover, M6 nuts, and earth labels.  
**Protection:** Complies with IP66, IK10.  
**Finish:** Outer box and cover 180-220 grit, 0.8-1.2 microns surface roughness.  
**Approvals:** FI, GL and GOST.  
**Delivery:** Base, cover, cover screws in stainless steel, fixing screws and cover plugs.

H	W	D	Part No.
150	150	80	ILS151508
		120	ILS151512
		300	ILS153008
200	200	80	ILS202008
		120	ILS202012
		300	ILS203008
300	300	80	ILS303008
		120	ILS303012
		120	ILS304012
400	400	80	ILS404012
		120	ILS406012
		120	ILS408012

### IMP, Mounting plate

**Description:** Steel mounting plate for ILS boxes.  
**Material:** 2mm galvanised steel.  
**Pack quantity:** 1 piece.

For enclosure		Part No.
H	W	
150	150	IMP1515
	300	IMP1530
	200	IMP2020
	300	IMP2030
	400	IMP2040
	500	IMP2050
300	600	IMP2060
	800	IMP2080
	300	IMP3030
	400	IMP3040
	500	IMP3050
	600	IMP3060
400	400	IMP4040
	600	IMP4060
	800	IMP4080

### IDR, DIN rail

**Description:** DIN rail 35mm for ILS boxes.S  
**Material:** Galvanized steel.  
**Pack quantity:** 1 piece.

For enclosure		Part No.
W		
800		IDR3580
600		IDR3560
500		IDR3550
400		IDR3540
300		IDR3530
200		IDR3520
150		IDR3515

### ILH, Hinges



**Description:** Using this accessory the cover can be hinged. Machining is required.  
**Material:** Stainless steel  
**Pack quantity:** Set of 2 hinges with mounting accessories.

Part No.
ILH02

### ILSB, Stainless Steel Wall mounting brackets

**Description:** Mounting kit for wall fixing. It includes the sealing washers to maintain the IP rating.  
**Material:** Stainless steel AISI 304.  
**Pack quantity:** 4 brackets with mounting accessories.

For enclosure		Part No.
D		
50		ILSB1
20		ILSB2



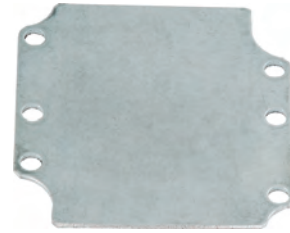
**HALP, Aluminium**



**Material:** Aluminium type ALSi 12.  
**Gasket:** Standard supply fitted with neoprene gasket. Silicone gaskets are available on request.  
**Temperature resistance:** -40°C to +80°C with the standard neoprene gasket. -50°C to +130°C with an optional silicone gasket.  
**Protection:** Complies with IP 65.  
**Finish:** RAL 7001  
**Approvals:** GL. For UL approvals, please contact our Sales Department.  
**Delivery:** Box base, cover and cover screws made of stainless steel.

H	W	D	Weight	Part No.
45	50	30	0.07	HALP050503GE
64	58	36	0.17	HALP060604GE
	98	36	0.22	HALP061004GE
	150	36	0.33	HALP061504GE
80	75	57	0.29	HALP080806GE
	125	57	0.44	HALP081306GE
	175	57	0.54	HALP081806GE
	250	57	0.71	HALP082506GE
122	122	80	0.86	HALP121208GE
		90	0.94	HALP121209GE
	220	80	1.29	HALP122208GE
		90	1.32	HALP122209GE
	360	80	1.41	HALP123608GE
160	160	90	1.96	HALP161609GE
	260	90	2.55	HALP162609GE
	360	90	4.31	HALP163609GE
	560	90	2.75	HALP165609GE
230	200	110	4.27	HALP232011GE
	330	110	5.75	HALP233311GE
		180	4.81	HALP233318GE
	400	110	6.89	HALP234011GE
	600	110	6.88	HALP236011GE

**HMP, HALP Mounting plate**



**Description:** Steel mounting plate for HALP boxes.  
**Material:** 1.5mm galvanized steel, 2.5mm HMP1656E and HMP2360E.  
**Pack quantity:** 1 piece.

For enclosure				
H	W	h	w	Part No.
64	58	54	48	HMP0606E
	98	54	88	HMP0610E
	150	54	140	HMP0615E
80	75	69	64	HMP0808E
	125	69	114	HMP0813E
	175	69	164	HMP0818E
	250	69	239	HMP0825E
122	122	108	107	HMP1212E
	220	108	204	HMP1222E
	360	108	343	HMP1236E
160	160	145	143	HMP1616E
	260	145	243	HMP1626E
	360	145	343	HMP1636E
	560	145	543	HMP1656E
230	200	214	183	HMP2320E
	330	214	313	HMP2333E
	400	214	383	HMP2340E
	600	214	583	HMP2360E

**HHI, Hinges**



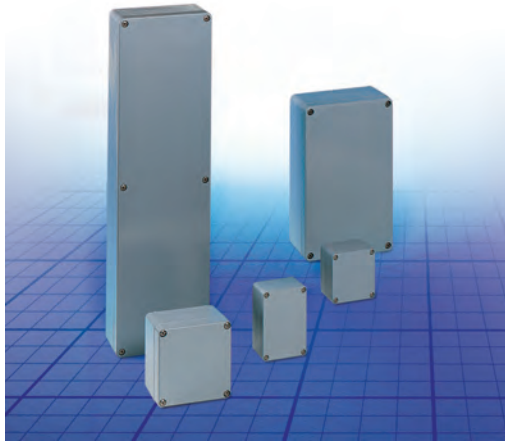
**Description:** Using this accessory the cover can be hinged. 150° opening. Machining is required.  
**Material:** Aluminium.  
**Pack quantity:** Set of 2 hinges in HHI2, and 3 hinges in HHI3. Mounting accessories are included.

Part No.
HHI02
HHI03

*Internal hinges available on request.*

# Polyester

## MGRP, Polyester.



**Material:** Glass-fibre reinforced polyester.  
**Gasket:** Standard supply fitted with neoprene gasket. Silicone gaskets are available on request.  
**Temperature resistance:** -40°C to +80°C with the standard neoprene gasket. -50°C to +130°C with an optional silicone gasket.  
**Protection:** Complies with IP65.  
**Finish:** RAL 7001  
**Approvals:** UL, GL.  
**Delivery:** Box base, cover and cover screws made of stainless steel.

H	W	D	Weight	Part No.	
75	80	55	0.23	MGRP080806GE	
		75	0.31	MGRP080808GE	
	110	55	0.30	MGRP081106GE	
		75	0.38	MGRP081108GE	
	160	55	0.41	MGRP081606GE	
		75	0.43	MGRP081608GE	
		55	0.45	MGRP081906GE	
	190	55	0.53	MGRP081908GE	
		75	0.53	MGRP081908GE	
120	122	90	0.75	MGRP121209GE	
		90	1.06	MGRP122209GE	
160	160	90	1.13	MGRP161609GE	
		260	90	1.17	MGRP162609GE
		360	90	2.15	MGRP163609GE
		560	90	3.20	MGRP165609GE
		90	3.20	MGRP165609GE	
250	255	120	2.66	MGRP252612GE	
		120	3.65	MGRP254012GE	
405	400	120	5.58	MGRP414012GE	

## GMP, MGRP Mounting plate



**Description:** Mounting plate for MGRP boxes.  
**Material:** 1.5 mm galvanized steel GMP1212E and above, and 2.5mm GMP1656E.  
**Pack quantity:** 1 piece.

For enclosure				
H	W	h	w	Part No.
75	80	64	69	GMP0808E
		64	99	GMP0811E
	160	64	149	GMP0816E
120	122	64	179	GMP0819E
		107	108	GMP1212E
	220	107	206	GMP1222E
160	160	144	143	GMP1616E
		144	244	GMP1626E
	360	144	344	GMP1636E
	560	144	544	GMP1656E
	255	233	240	GMP2526E
405	400	233	383	GMP2540E
		390	385	GMP4140E

## HHI, Hinges



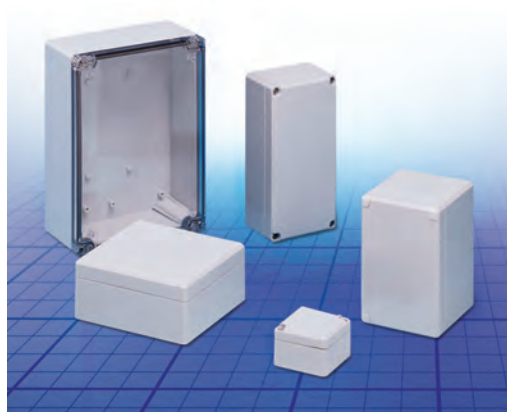
**Description:** Using this accessory the cover can be hinged. 150° opening. Machining is required.  
**Material:** Aluminium.  
**Pack quantity:** Set of 2 hinges in HHI2, and 3 hinges in HHI3. Mounting accessories are included.

Part No.
HHI02
HHI03

*Internal hinges available on request.*



**DABP, ABS**



**Description:** ABS box, suitable for indoor use. Low UV radiation resistance.  
**Material:** ABS.  
**Gasket:** Polyurethane gasket integrated in the box cover.  
**Temperature resistance:** -40°C to +60°C.  
**Flammability:** UL94 HB  
**Protection:** Complies with IP66/67, IK07 (+35°C), IK06 (-25°C).  
**Finish:** RAL 7035  
**Approvals:** GL, FI and GOST.  
**Delivery:** Box body, plain cover, cover screws made of stainless steel, mounting screws and cover plugs made of polyamide.  
**On request:** Box with transparent cover: the transparent cover is made of polycarbonate, the item number is DABPxxxxxTE.

H	W	D	Weight	Part No.
53	55	36	0.04	DABP050504GE
	63	36	0.05	DABP050704GE
80	82	56	0.12	DABP080806GE
		86	0.14	DABP080809GE
120	120	56	0.15	DABP081206GE
		86	0.19	DABP081209GE
		160	0.19	DABP081606GE
120	122	86	0.23	DABP081609GE
		56	0.20	DABP121206GE
		86	0.26	DABP121209GE
150	200	160	0.34	DABP121609GE
		86	0.38	DABP122009GE
160	240	76	0.39	DABP152008GE
		91	0.55	DABP162409GE
230	300	121	0.68	DABP162412GE
		86	0.85	DABP233009GE
		111	0.90	DABP233011GE

**DMP, Mounting plate**



**Description:** Steel mounting plate for DABP/DPCP boxes.  
**Material:** 1.5 mm galvanized steel.  
**Pack quantity:** 1 piece.

For enclosure				
H	W	h	w	Part No.
80	82	55	68	DMP0808E
	120	65	93	DMP0812E
120	160	65	133	DMP0816E
	122	105	95	DMP1212E
	160	105	132	DMP1216E
200	105	172	DMP1220E	
150	200	133	172	DMP1520E
160	240	145	213	DMP1624E
230	300	210	285	DMP2330E

**DR, DIN rail**



**Description:** DIN rail 35 mm for DABP/DPCP boxes.  
**Material:** Steel.  
**Pack quantity:** 1 piece.

For enclosure			Part No.
W	H/W		
82			DR350584E
120/122			DR350964E
160			DR351364E
200 *			DR351604E
200 **			DR351764E
	250		DR352154E
300			DR352754E

\* DABP152008; \*\* DABP122009

**DSHI, Hinges**



**Description:** Using this accessory the cover can be hinged. Machining is required.  
**Material:** Polycarbonate.  
**Finish:** RAL 7035.  
**Pack quantity:** Set of 2 hinges with mounting accessories.

Part No.
DSHI1E

**DFL, Wall mounting brackets**

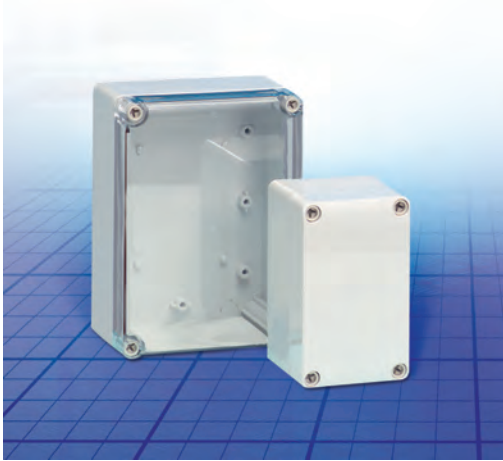


**Description:** Mounting brackets for wall fixing.  
**Material:** Polycarbonate.  
**Surface characteristics:** RAL 7035.  
**Pack quantity:** 4 brackets with mounting accessories.

Part No.
DFL1E

# ABS

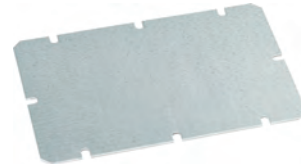
## SABP, Small ABS box



**Description:** ABS box, suitable for indoor use. Low UV radiation resistance.  
**Material:** ABS.  
**Gasket:** Polyurethane gasket integrated in the box cover.  
**Temperature resistance:** - 40°C to + 60°C.  
**Flammability:** UL94 HB  
**Protection:** Corresponds with IP 66/67,IK07 (+35°C), IK06 (-25°C).  
**Finish:** RAL 7035  
**Approvals:** GL, FI and GOST.  
**Delivery:** Box base, cover, cover screws of polyamide and mounting screws.  
**On request:** Box with transparent cover: the transparent cover is made of polycarbonate, the item number is SABPxxxxxTE. Box made of polycarbonate: With grey or transparent cover, the item number is SPCPxxxxxGE/SPCPxxxxxTE.

H	W	D	Weight (g)	Part No.	
75	125	75	184	SABP081308GE	
		100	243	SABP081310GE	
		125	266	SABP081313GE	
125	125	75	250	SABP131308GE	
		100	317	SABP131310GE	
		125	353	SABP131313GE	
		175	75	328	SABP131808GE
			100	401	SABP131810GE
175	175	125	459	SABP131813GE	
		150	521	SABP131815GE	
		75	392	SABP181808GE	
			490	SABP181810GE	
			557	SABP181813GE	
		250	150	616	SABP181815GE
			75	553	SABP182508GE
100	666		SABP182510GE		
		150	842	SABP182515GE	

## SMP, Mounting plate



**Description:** Steel mounting plate for SABP boxes.  
**Material:** 1.5 mm galvanized steel.  
**Pack quantity:** 1 piece.

For enclosure				
H	W	h	w	Part No.
75	125	48	98	SMP0813E
125	125	98	98	SMP1313E
		98	148	SMP1318E
175	175	148	148	SMP1818E
		148	223	SMP1825E

## DR2, DIN rail



**Description:** DIN rail 35 mm for SABP boxes.  
**Material:** Steel.  
**Pack quantity:** 1 piece.

H/W	Part No.
75	DR350404E
125	DR350904E
175	DR351404E
250	DR352154E

## SCP, Cover plugs



**Description:** Only used in hinged boxes, the standard cover screws are replaced by cover plugs.  
**Material:** Polyethylene.  
**Pack quantity:** 10 pieces.

For enclosure	
D	Part No.
75	SCP08E
100	SCP10E
125, 150	SCP1315E

**DSHI, Hinges**

**Description:** Using this accessory the cover can be hinged. Machining is required.  
**Material:** Polycarbonate.  
**Finish:** RAL 7035.  
**Pack quantity:** Set of 2 hinges with mounting accessories.

**Part No.**

DSHI1E

**SFL, Wall mounting brackets**

**Description:** Mounting brackets for wall fixing.  
**Material:** Polycarbonate.  
**Finish:** RAL 7035.  
**Pack quantity:** 4 brackets with mounting accessories.

**Part No.**

SFL1E

# ABS

## OABP, Large ABS box



**Description:** ABS box, suitable for indoor use. Low UV radiation resistance.

**Material:** ABS

**Gasket:** Polyurethane gasket integrated in the box cover.

**Temperature resistance:** -40°C to +60°C.

**Flammability:** UL94 HB

**Protection:** Complies with IP 66/67, IK07 (+35°C), IK06 (-25°C).

**Finish:** RAL 7035

**Delivery:** Box base, cover, cover screws of polyamide and mounting screws.

**Approvals:** GL,FI and Gost

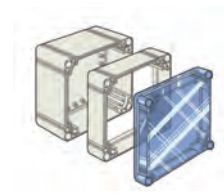
With grey cover

H	W	D	Weight (g)	Part No.
200	200	132	894	OABP202013GE
	300	132	1176	OABP203013GE
	400	132	1467	OABP204013GE
300	300	132	1510	OABP303013GE
	400	132	1950	OABP304013GE
	600	132	2696	OABP306013GE
400	600	132	3484	OABP406013GE

With transparent cover

H	W	D	Weight (g)	Part No.
200	200	132	926	OABP202013TE
	300	132	1218	OABP203013TE
	400	132	1512	OABP204013TE
300	300	132	1568	OABP303013TE
	400	132	2003	OABP304013TE
	600	132	2765	OABP306013TE
400	600	132	3567	OABP406013TE

## OPCP-EE, Polycarbonate frame extension



**Description:** Depth extension frame, to be used when you need more depth than the standard. Can be used in combination with the OPCP range.

**Material:** Polycarbonate

**Pack quantity:** 1 piece

For enclosure				Part No.
H	W	D		
200	200	55		OPCP202006EE
	300	55		OPCP203006EE
	400	55		OPCP204006EE
300	300	55		OPCP303006EE
	400	55		OPCP304006EE
	600	55		OPCP306006EE
400	600	55		OPCP406006EE

## OMP, Mounting plate



**Description:** Steel mounting plate for OABP/OPCP boxes.

**Material:** 1.5 mm galvanized steel.

**Pack quantity:** 1 piece.

For enclosure					Part No.
H	W	h	w		
200	200	160	160		OMP2020E
	300	160	260		OMP2030E
	400	160	360		OMP2040E
300	300	260	160		OMP3030E
	400	260	260		OMP3040E
	600	260	560		OMP3060E
400	600	360	560		OMP4060E

## DR3, DIN rail



**Description:** DIN rail 35 mm for OABP/OPCP boxes.

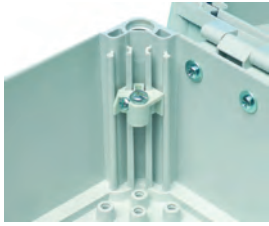
**Material:** Steel.

**Pack quantity:** 1 piece.

For enclosure		Part No.
W		
200		DR351505E
300		DR352505E
400		DR353505E



### OEL, Mounting plate depth adjustment kit



**Description:** Allows mounting of mounting plate at any depth. Include M5 bolts.  
**Pack quantity:** OEL1E: 1 piece, and OELA1.04E: 4 pieces.

Part No.
OELA1.04E
OEL1E

### OLW, Wing screw



**Description:** For enclosures equipped with hinges, used opposite hinges for easier access.  
**Pack quantity:** 15 pieces

Part No.
OLW55E

### OCP, Cover plugs



**Description:** Only used in hinged boxes, the standard cover screws are replaced by cover plugs.  
**Material:** Polyethylene.  
**Pack quantity:** 12 pieces.

Part No.
OCP1E

### OHI, Hinges



**Description:** Using this accessory the cover can be hinged. Machining is required.  
**Material:** Polycarbonate.  
**Finish:** RAL 7035.  
**Pack quantity:** Set of 2 hinges with mounting accessories.

Part No.
OHI1E

### OTS, Threaded bushing for cover screw



**Description:** Required for fixing a cover on the rear of the box, in conjunction with screws OLW.  
**Pack quantity:** 1 piece

Part No.
OTS1E

### OFL, Wall mounting brackets

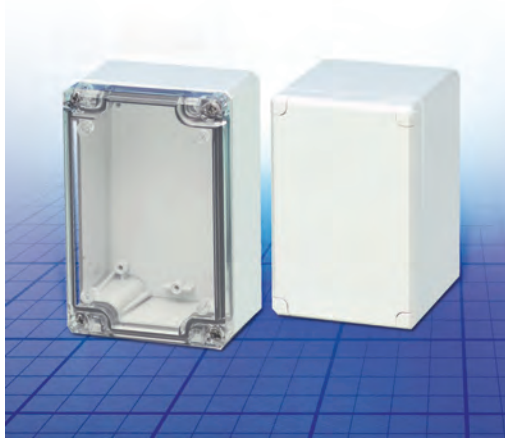


**Description:** Mounting brackets for wall fixing. Can be mounted in three different directions, and will support approximately a weight of 60 Kgs.  
**Material:** Polyamide.  
**Finish:** RAL 7035.  
**Pack quantity:** 4 brackets with mounting accessories.

Part No.
OFL1E

# Polycarbonate

## DPCP, Polycarbonate



**Description:** Polycarbonate box, suitable for outdoor use. High UV radiation resistance. Self-extinguishing.

**Material:** Polycarbonate.

**Gasket:** Polyurethane gasket integrated in the box cover.

**Temperature resistance:** -50°C to +100°C.

**Flammability:** UL746C 5V

**Protection:** Complies with IP 66/67.

**Finish:** RAL 7035

**Approvals:** GL, FI, GOST. For UL and cUL please contact our sales department.

**Delivery:** Box body, plain cover, cover screws made of stainless steel, mounting screws and cover plugs made of polyamide.

**On request:** Box with transparent cover: the transparent cover is made of polycarbonate, the item number is DPCPxxxxxTE.

H	W	D	Weight	Part No.
53	55	36	0.05	DPCP050504GE
	63	36	0.06	DPCP050704GE
80	82	56	0.13	DPCP080806GE
		86	0.16	DPCP080809GE
120	122	56	0.17	DPCP081206GE
		86	0.21	DPCP081209GE
160	160	56	0.19	DPCP081606GE
		86	0.26	DPCP081609GE
120	122	56	0.22	DPCP121206GE
		86	0.29	DPCP121209GE
160	160	91	0.36	DPCP121609GE
		86	0.42	DPCP122009GE
150	200	76	0.42	DPCP152008GE
160	240	91	0.61	DPCP162409GE
		121	0.74	DPCP162412GE
230	300	86	0.97	DPCP233009GE
		111	1.11	DPCP233011GE

## DMP, Mounting plate



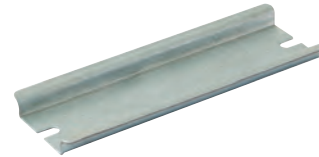
**Description:** Steel mounting plate for DABP/DPCP boxes.

**Material:** 1.5 mm galvanized steel.

**Pack quantity:** 1 piece.

For enclosure					Part No.
H	W	h	w		
80	82	55	68		DMP0808E
	120	65	93		DMP0812E
120	160	65	133		DMP0816E
	122	105	95		DMP1212E
160	160	105	132		DMP1216E
	200	105	172		DMP1220E
150	200	133	172		DMP1520E
160	240	145	213		DMP1624E
230	300	210	285		DMP2330E

## DR, DIN rail



**Description:** DIN rail 35 mm for DABP/DPCP boxes.

**Material:** Steel.

**Pack quantity:** 1 piece.

For enclosure			Part No.
W	H/W		
82			DR350584E
120/122			DR350964E
160			DR351364E
200 *			DR351604E
200 **			DR351764E
	250		DR352154E
300			DR352754E

\* DABP152008; \*\* DABP122009

## DFL, Wall mounting brackets



**Description:** Mounting brackets for wall fixing.

**Material:** Polycarbonate.

**Surface characteristics:** RAL 7035.

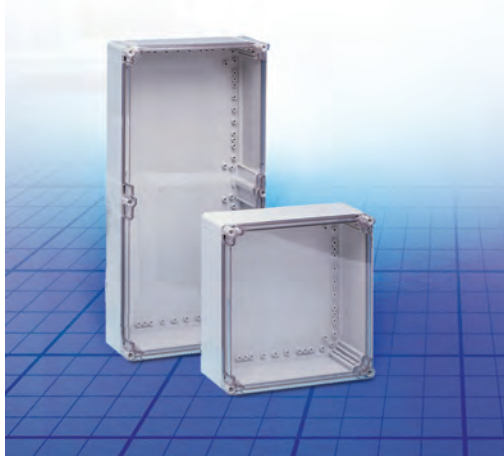
**Pack quantity:** 4 brackets with mounting accessories.

Part No.
DFL1E



## Polycarbonate

### OPCP, Polycarbonate



**Description:** PC box, suitable for outdoor use. High UV radiation resistance.  
**Material:** Polycarbonate.  
**Gasket:** Polyurethane gasket integrated in the box cover.  
**Temperature resistance:** -50°C to +100°C.  
**Flammability:** UL746C5V.  
**Protection:** Complies with IP 66/67.  
**Finish:** RAL 7035  
**Approvals:** GL, FI, GOST. For UL and cUL please contact our sales department.  
**Delivery:** Box body, cover, cover screws made of polyamide and mounting screws.

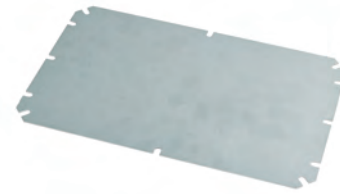
With grey cover

H	W	D	Weight (g)	Part No.
200	200	130	1039	OPCP202013GE
	300	130	1349	OPCP203013GE
	400	130	1674	OPCP204013GE
300	300	130	1738	OPCP303013GE
	400	130	2199	OPCP304013GE
400	600	130	3964	OPCP406013GE
	300	600	3000	OPCP306013GE

With transparent cover

H	W	D	Weight (g)	Part No.
200	200	130	1039	OPCP202013TE
	300	130	1349	OPCP203013TE
	400	130	1674	OPCP204013TE
300	300	130	1738	OPCP303013TE
	400	130	2199	OPCP304013TE
400	600	130	3000	OPCP306013TE
	300	600	3964	OPCP406013TE

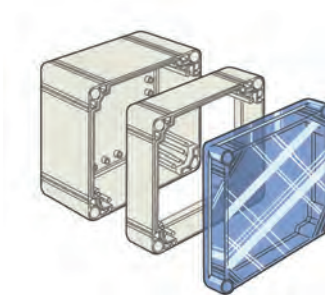
### OMP, Mounting plate



**Description:** Steel mounting plate for OABP/OPCP boxes.  
**Material:** 1.5 mm galvanized steel.  
**Pack quantity:** 1 piece.

For enclosure				
H	W	h	w	Part No.
200	200	160	160	OMP2020E
	300	160	260	OMP2030E
	400	160	360	OMP2040E
300	300	260	160	OMP3030E
	400	260	260	OMP3040E
	600	260	560	OMP3060E
400	600	360	560	OMP4060E

### OPCP-EE, Polycarbonate frame extension

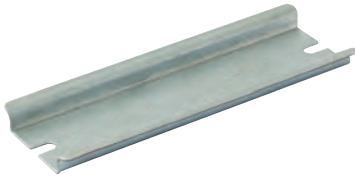


**Description:** Depth extension frame, to be used when you need more depth than the standard. Can be used in combination with the OPCR range.  
**Material:** Polycarbonate  
**Pack quantity:** 1 piece

For enclosure			
H	W	D	Part No.
200	200	55	OPCP202006EE
	300	55	OPCP203006EE
	400	55	OPCP204006EE
300	300	55	OPCP303006EE
	400	55	OPCP304006EE
	600	55	OPCP306006EE
400	600	55	OPCP406006EE

## Polycarbonate

### DR3, DIN rail



**Description:** DIN rail 35 mm for OABP/OPCP boxes.  
**Material:** Steel.  
**Pack quantity:** 1 piece.

For enclosure		Part No.
W		
200		DR351505E
300		DR352505E
400		DR353505E

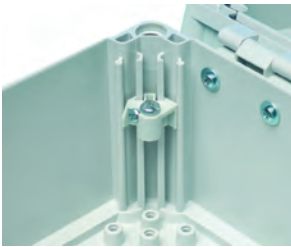
### OCP, Cover plugs



**Description:** Only used in hinged boxes, the standard cover screws are replaced by cover plugs.  
**Material:** Polyethylene.  
**Pack quantity:** 12 pieces.

Part No.
OCP1E

### OEL, Mounting plate depth adjustment kit



**Description:** Allows mounting of mounting plate at any depth. Include M5 bolts.  
**Pack quantity:** OEL1E: 1 piece, and OELA1.04E: 4 pieces.

Part No.
OELA1.04E
OEL1E

### OFL, Wall mounting brackets



**Description:** Mounting brackets for wall fixing. Can be mounted in three different directions, and will support approximately a weight of 60 Kgs.  
**Material:** Polyamide.  
**Finish:** RAL 7035.  
**Pack quantity:** 4 brackets with mounting accessories.

Part No.
OFL1E

